

Feature Inverter Ceiling Cassette

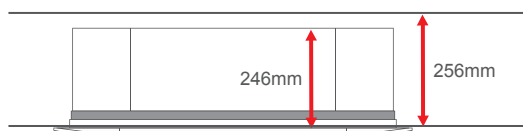
One For All Panel Design

The curvy edge and same panel size for all models enabling it to blend in perfectly with any kind of space design especially when there are multiple units installed together.



Unit Dimension	Panel Dimension
840 x 840 mm	950 x 950 mm

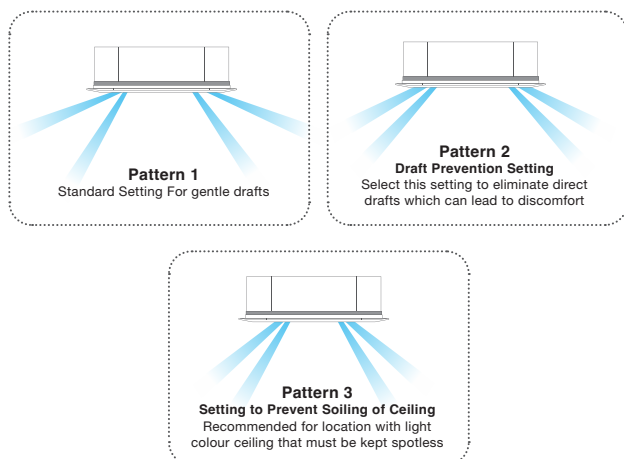
Fit For Tight Ceiling Application



Model	Unit Height
A3CKY20/25/28/30F	246 mm
A3CKY35/40/50F	288 mm

4 Dimensional Cooling Comfort

Prioritize your cooling comfort with different airflow setting. Airflow direction can be fixed at user's designated angle by remote controller. Set the airflow pattern setting according to your need and situation.



Switchable Fan Speed

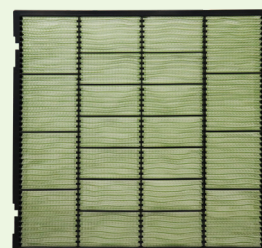
Control the fan speed up to 4-steps for comfort selection.

To enjoy the noise-free disturbance, quiet mode can be selected to achieve smooth airflow with minimum noise pollution



Indoor Air Purification

Equipped with Filtronz+ filter as standard decompose virus and reduce bacteria & fungus on the filter surface with effectiveness up to 99.99%.



Virus



Bacteria



Mould



Allergen



Odour

Live The Smarter Way

Built in Wi-Fi Acson Network Adapter and ready to be paired with MY Acson app. Offering you the smart convenience to control and real time monitoring of your ceiling cassette



MY ACSON



Scan for My Acson Wifi Adaptor
Installation and Pairing Video.



Scan for My Acson
Wifi Adaptor Installation Video



Scan for My Acson
Wifi Adaptor Pairing Video

Dehumidify While Maintaining The Room Temperature

Too much humidity can cause discomfort and unpleasant situation. Select dry mode to keep the room dehumidified while maintaining the room temperature for better comfort

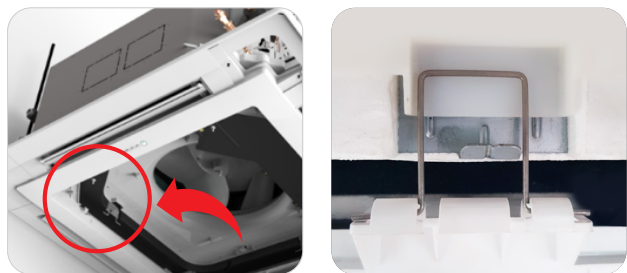
Easy Height Adjustment

Each unit comes with adjustable cover pockets at four corners which is designed for easier adjustment of the suspended height of the unit.



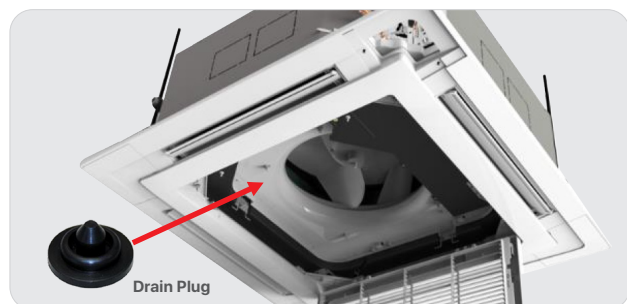
Panel Hook Mechanism

Support Panel with panel hook to provide hassle-free installation or serviceability by allowing to work with both hand free.



Easier Maintenance

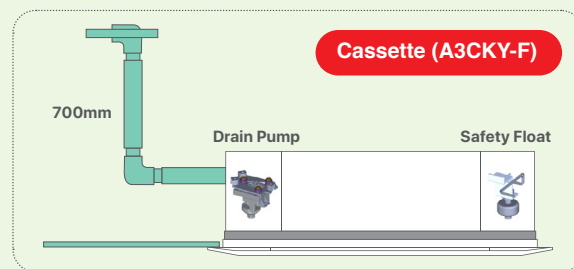
The condition of drain pan and drain water can be checked regularly by removing intake grille and drain plug.



Built-In Drain Pump

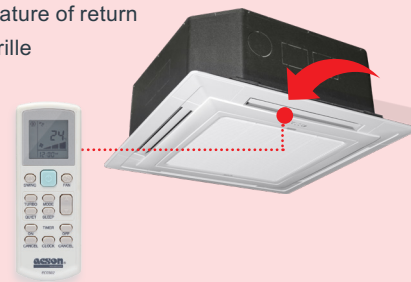
Comes with high head drain pump of 700mm* pressure head at standard. Drainage protection with safety float incorporated in drain pump where it functions to monitor water level and trigger drain pump to cut in when drainage water reach certain level.

* 700mm is calculated from drain pipe outlet to highest elevation point.



Standard Setting (GS02 Wireless Controller)

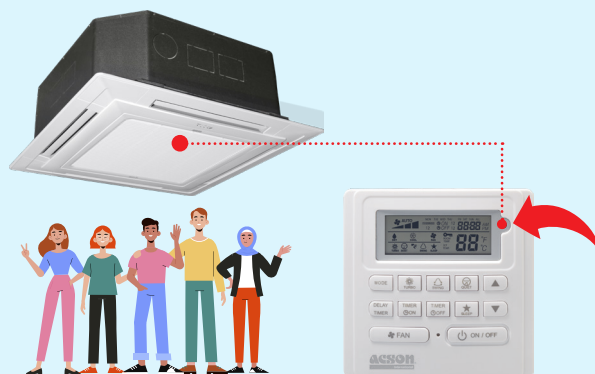
- Receiver is in panel
- Sensing temperature of return air into intake grille



Optional Wired Controller SLM9

SLM wired can be purchased as optional accessories. Temperature sensing can be set at the unit, or to further improve comfort level, closer to target area at the wired controller SLM9.

- Optional receiver and thermo sensor
- Sensing temperature of surrounding at human height



Technical Specification

Ceiling Cassette



Model			Indoor Unit	A3CKY20FF	A3CKY25FF	A3CKY28FF	A3CKY30FF	A3CKY 35FF	A3CKY40FF	A3CKY50FF
			Outdoor Unit	A3LCY20F	A3LCY25F	A3LCY28F	A3LCY30F	A3LCY35F	A3LCY40F	A3LCY50F
Capacity			HP	2.0HP	2.5HP	2.8HP	3.0HP	3.5HP	4.0HP	5.0HP
Nominal Cooling Capacity			BTU/h	18500 (7,800-19,100)	20,500 (8,900-21,500)	24,200 (10,900-27,300)	30,000 (14,300-34,100)	36,000 (17,100-38,200)	42,000 (19,500-47,800)	48,000 (21,200-52,900)
			kW	5.42	6.00	7.10	8.80	10.55	12.31	14.07
Nominal Total Input Power			W	1,680	1,960	2,070	2,710	3,470	4,215	5,455
Nominal Running Current			A	7.37	8.55	9.07	12.00	15.3	6.48	8.38
EER			W/W	3.23	3.07	3.43	3.24	3.04	2.92	2.58
CPSF			Wh/Wh	4.47	4.34	4.78	4.67	4.68	4.29	4.10
Power Source			V/Ph/Hz	220-240/1/50	220-240/1/50	220-240/1/50	220-240/1/50	220-240/1/50	380-415/3/50	380-415/3/50
				Power from OUTDOOR						
Indoor Unit	Air Flow (H/M/L/Q)		CFM	890/760/620/490				1120/1030/890/760		
	Sound Pressure Level (H/M/L/Q)		dBA	44/40/37/35	44/40/37/35	44/40/37/35	44/40/37/35	48/46/43/40	48/46/43/40	48/46/43/40
	Unit Dimensions (H x W x D)	Unit	mm (in)	246 x 840 x 840 (9.69 x 33.07 x 33.07)				288 x 840 x 840 (11.34 x 33.07 x 33.07)		
		Packaging	mm (in)	324 x 922 x 922 (12.76 x 36.30 x 36.30)				370 x 922 x 922 (14.57 x 36.30 x 36.30)		
	Panel Dimensions (H x W x D)	Panel	mm (in)	65 x 950 x 950 (2.56 x 37.40 x 37.40)						
		Packaging	mm (in)	116 x 1,008 x 990 (4.57 x 39.69 x 38.98)						
	Unit Weight		kg	22	22	22	22	25	25	25
	Panel Weight		kg	5	5	5	5	5	5	5
	Condensate Drain Size		mm	19	19	19	19	19	19	19
	Sound Pressure Level		dBA	52	52	52	53	54	54	56
Outdoor Unit	Unit Dimension (H x W x D)		mm (in)	615 x 845x 300 (24.21 x 33.27 x 11.81)			695 x 930 x 350 (27.36 x 36.61 x 13.78)		990 x 940 x 320 (38.98 x 37.01 x 12.60)	
	Unit Weight		kg	37	37	37	40	40	62	62
	Pipe Connection	Liquid	mm (in)	6.4 (1/4)	6.4 (1/4)	9.5 (3/8)	9.5 (3/8)	9.5 (3/8)	9.5 (3/8)	9.5 (3/8)
		Gas	mm (in)	12.7 (1/2)	12.7 (1/2)	15.9 (5/8)	15.9 (5/8)	15.9 (5/8)	15.9(5/8)	15.9 (5/8)
	Maximun Piping Length		m (ft)	30(98.43)	30(98.43)	30(98.43)	50(164.04)	50(164.04)	50(164.04)	50(164.04)
	Maximun Piping Elevation		m (ft)	15(49.21)	15(49.21)	15(49.21)	30(98.43)	30(98.43)	30(98.43)	30(98.43)
	Refrigerant			R32						



GS02 (Default)



SLM9 (Optional)



A3LCY20/25/28F



A3LCY30/35F



A3LCY40/50F