



Light Commercial Air Conditioners

Single Split

Reimagine Efficiency.
Rediscover Comfort.



CONTENTS



ABOUT CARRIER

04

THE INVENTION THAT CHANGED THE WORLD

06

LEADING THE SUSTAINABILITY NARRATIVE

07

LIGHT COMMERCIAL PRODUCT LINE-UP

08

FEATURES

CASSETTE

10

DUCTED

14

UNDER CEILING

16

TECHNICAL SPECIFICATIONS

CASSETTE

18

DUCTED

22

UNDER CEILING

24



ABOUT CARRIER

In 1902, Willis Carrier solved one of mankind's most elusive challenges by controlling the indoor environment through modern air conditioning. His invention enabled countless industries, promoting global productivity, health and personal comfort.

Today, Carrier® innovations are found across the globe and in virtually every facet of daily life. We create comfortable and productive environments, regardless of the climate, and provide solutions, services and education to lead the green building movement.

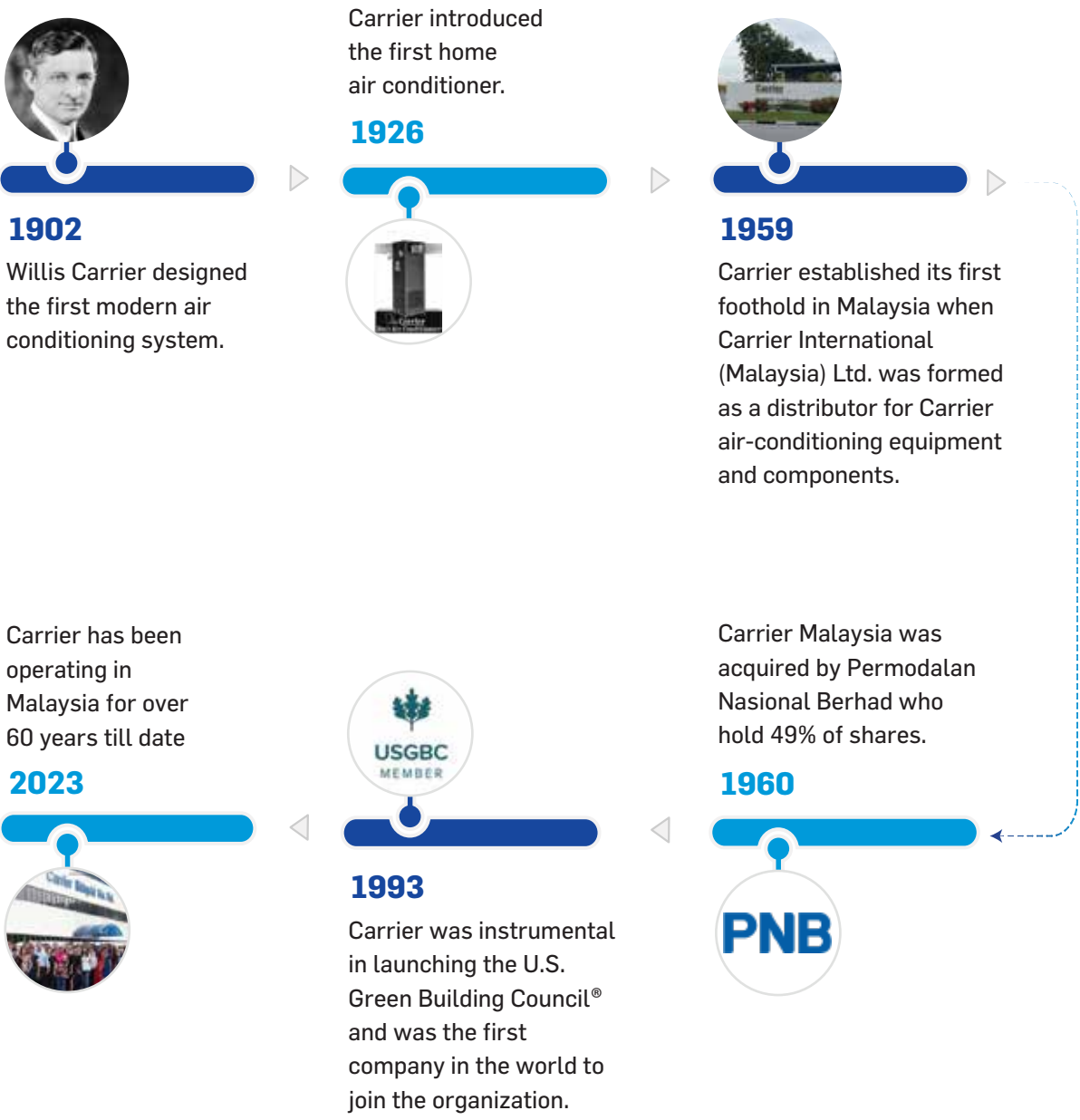
Carrier established its first foothold in Malaysia in 1959 when Carrier International (Malaysia) Limited was formed. Read on to know how we grew our foothold in this region.



THE INVENTION THAT CHANGED THE WORLD

Built on Willis Carrier's invention of modern air conditioning in 1902, Carrier is a world leader in heating, air conditioning and refrigeration solutions. We constantly build upon our history of proven innovation with new products and services that improve global comfort and efficiency.

The range of advanced Carrier products and solutions is engineered to deliver efficiency to our customers while having the least impact on our environment. This is a reflection of our commitment to be a better corporate, environmental and social citizen. Below are our milestones.

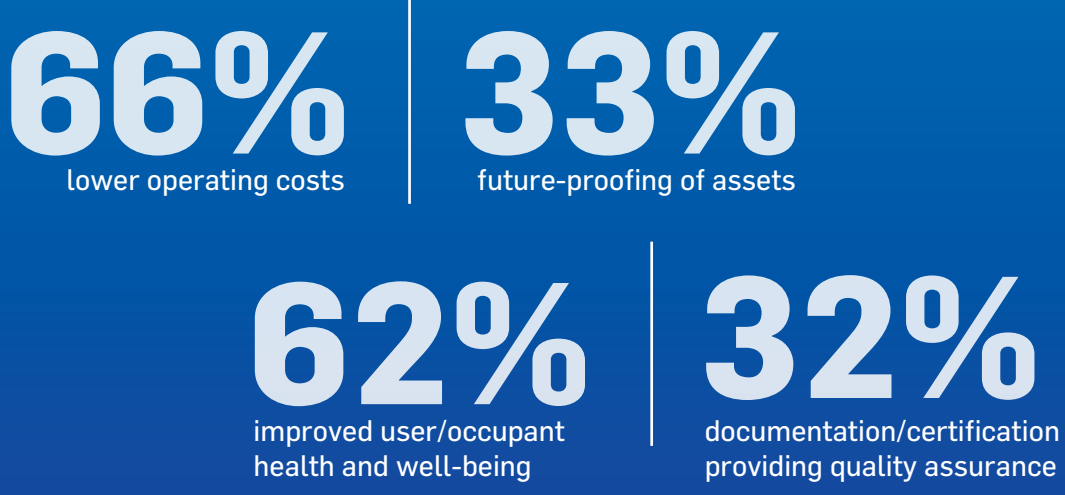


LEADING THE SUSTAINABILITY NARRATIVE

Air conditioning solutions emit a certain amount of greenhouse gases (GHGs) into the atmosphere that ultimately leads to global warming. As a means to identify and compare the global warming impact of different gases, the Global Warming Potential (GWP) was devised.

Carrier doesn't just manufacture HVAC solutions that deliver exceptional cooling, we are a company that also prioritizes the environment to ensure a greener Earth for future generations. In our commitment to reduce our customers' carbon footprints and enable green buildings, we use a low Global Warming Potential (GWP) R32 refrigerant. This reduces the total CO₂ consumption by 78% in wall-mounted units and enables more optimal energy consumption.

Top benefits of green buildings as per the World Green Building Trends SmartMarket Report 2021:



LIGHT COMMERCIAL AIR CONDITIONERS

The Carrier Light Commercial range of Split Unit air conditioners are crafted with advanced technology and expertise to deliver the ideal balance between comfort, sustainability and efficiency. Perfect for smaller spaces and light applications such as offices and apartment buildings, this is a smart and innovative solution for your light cooling needs.



Smart WiFi Control

Explore comfort and convenience while ensuring energy savings with Carrier's smart WiFi controllers.

Range of Solutions

Open your spaces to our range of high-performance air conditioning systems including cassettes, inverter ducted systems, consoles and under ceilings.



Special Gold Fin Coating

The Gold Fin coating gives your air conditioners special anti-corrosive properties for reliable performance and increased efficiency, including in outdoor units which run the risk of rusting, corroding and gathering dust due to changes in the weather.

The outdoor units have a special gold-fin, anti-corrosion condenser coil that can withstand extreme weathers and deliver reliable function as compared to a standard blue coating.

PRODUCT LINE-UP

Series	Indoor Unit	Type	12,000 Btu/h	18,000 Btu/h	24,000 Btu/h	30,000 Btu/h	36,000 Btu/h	42,000 Btu/h	45,000 Btu/h	48,000 Btu/h	55,000 Btu/h
Cassette		42KTD Fixed Speed, 50Hz		●	●	●	●	Four Way New Cassette			
		42QTD Inverter, 50Hz	Compact Cassette		●	●	●	●		●	●
Concealed Ducted		42QSB Inverter, 50Hz	●	●	●	●	●	●		●	●
Under Ceiling		42KZL Fixed Speed, 50Hz			●	●	●		●		
		K2QZL Inverter, 50Hz		●	●		●			●	●

Series	Outdoor Unit*	Type	12,000 Btu/h	18,000 Btu/h	24,000 Btu/h	30,000 Btu/h	36,000 Btu/h	42,000 Btu/h	45,000 Btu/h	48,000 Btu/h	55,000 Btu/h
Cassette		Fixed Speed		●	●	●	●	●	●		
		Variable Speed	●	●	●	●	●	●		●	●
Concealed Ducted		Variable Speed	●	●	●	●	●	●		●	●
Under Ceiling		Fixed Speed				●	●	●	●		
		Variable Speed	●	●	●		●			●	●



*Disclaimer: Each IDU requires only one ODU. Different ODUs may be used to ensure different capacities of the air conditioner.



Compact Cassette
42QTD | 12k-18k

Cassette

Product Features

Reserved Air Outlet For Duct

The side of the indoor unit has a **space reserved for an air outlet to connect the air duct to small rooms nearby.**

360° Airflow Panel

This ensures **uniform temperature distribution** across the room without any dead corners.

Built-In Drain Pump

To enable **greater convenience**, the built-in drain pump is installed in an area with more space and that can **lift the condensing water up to 750 mm.**

Easily Maintained Drain Pump

The drain pump's improved structure makes it **more convenient to conduct any repairs and maintenance** on it.

Reserved Remote On-Off and Alarm Ports

Remote On/Off: With the reserved ports, a remote switch can be easily connected to enable remote control.

Alarm: Our built-in PCB can output an alarm signal which makes it possible to set up an external alarm light or vibration gauge.

Fresh Air Intake

A **ventilation motor up to 200W** can be installed in the fresh air duct. This would work with the indoor fan to **increase the volume of fresh air.**



Four Way Cassette
42KTD | 18k – 45k

Cassette

Product Features

Optimized Evaporator Design

The product comes with an improved inner structure enlarges the heat exchange area and increases the airflow.

Larger Air Outlet

The enlarged air outlet of the Carrier new cassette, by 23%, enables a more comfortable experience.

Optimized Fan Design

The bionic design optimizes the air duct and airflow, thus allowing for a wind wheel to reduce noise by 4 dB.

Optimized Heat Dissipation

The Carrier cassette offering optimizes heat dissipation method from simply cooling the air to introducing an annular refrigerant so as to enhance the heat dissipation effect on the PCB board.

Independent Louver

Every louver of the Carrier cassette is built with an independent airflow outlet angle adjustment feature so as to enhance performance.

User-Friendly Hook Design

The product's ergonomic installer design makes it easier to operate by enabling users to grab and lift up parts without the risk of injuring hands.



Ducted



Ducted
42QSB | 12k – 55k

Product Features

Concealed Installation

The Carrier ducted air conditioning offering comes with a **concealed installation** so as to **blend seamlessly** into your indoor décor.

Slim Design

This advanced offering is the industry's **lowest-height cooling solution** designed to **fit into tight roof spaces**.

18k Unit: 210 mm; 24k / 36k Unit: 249 mm; 45k / 55k Unit: 300 mm

Easy Installation

The Carrier ducted solution is crafted such that the **frame size of the rear and bottom air inlet is the same**. This ensures ease of installation and in case the user needs to switch to match different applications.

Top Middle Static Pressure

The Carrier ducted offering is an air conditioner with a medium static pressure that is the **industry's widest range in this category**.

Easy Clean

This offering's indoor unit comes with a **large window design** and **easy-to-remove filter** for ease of cleaning. On detaching the motor and blower wheels, the heat exchanger and water receiver tray are left exposed for removing any dust using a vacuum.

Easy Maintenance

The Carrier ducted air conditioner comes with a **wide A6 duct** that provides **ample space for easy maintenance**.

Built-In Drain Pump*

The built-in drain pump can **lift the water up to 750 mm high** which **widens the drainage piping range**.

Constant Air Volume Control

Engineered with an advanced constant air volume control technology, the Carrier ducted solution can **automatically adjust to the ideal static pressure and maintain a constant air volume**.

*Optional features



Under Ceiling



Under Ceiling

Fixed Speed: 42KZL | 24k – 55k

Inverter Speed: 42QZL | 12k – 55k

Product Features

Aesthetic Installation

The Carrier under ceiling air conditioning solution is crafted with a fashionable design that is **suitable for different aesthetics**. Its ceiling installation option **saves room space**.

3D Airflow

The Carrier under ceiling comes with a vertical and horizontal airflow that can be adjusted using a remote controller. This delivers **optimum air in the space**, making it more comfortable.

2-Way Drainage

The Carrier under ceiling air conditioning solution comes with **optimally-sized drainage holes** on the right and left side to **enable efficient drainage** and **avoid space limitations** for drainage pipe installation.

Universal Spare Parts

More than 60% of parts and assemblies such as fan wheels, plastic cases and metal parts are **universal** for three different bodies in the Carrier under ceiling system which **streamlines production and maintenance**.

Louver Position Memory

The louver of the Carrier under ceiling system is manufactured with an **advanced memory system**. It remembers the angle last used and **automatically moves to the same position when restarting the system**.

Technical Specifications

CASSETTE

Inverter
42QTD | 12k – 55k



Indoor model			42QTD012N8VSB	42QTD018N8VSB	42QTD024N8VSB	42QTD030N8VSB	42QTD036N8VSB	42QTD042N8VSB	42QTD048N8VSB	42QTD055N8VSB
Outdoor model*			38QUS012N8VSB	38QUS018N8VSB	38QUS024N8VSB	38QUS030N8VSB	38QUS036N8VSB-1	38QUS042N8VSB	38QUS048N8VSB	38QUS055N8VSB
Power supply (Indoor)		V- Ph-Hz	220–240V, 1Ph, 50Hz	220–240V, 1Ph, 50Hz	220–240V, 1Ph, 50Hz	220–240V, 1Ph, 50Hz	220–240V, 1Ph, 50Hz	220–240V, 1Ph, 50Hz	220–240V, 1Ph, 50Hz	220–240V, 1Ph, 50Hz
Power supply (Outdoor)		V- Ph-Hz	220–240V, 1Ph, 50Hz	220–240V,1Ph,50Hz	220–240V, 1Ph, 50Hz	220–240V, 1Ph, 50Hz	220–240V, 1Ph, 50Hz	220–240V, 1Ph, 50Hz	380–415V, 3Ph, 50Hz	380–415V, 3Ph, 50Hz
Power supply from			Outdoor	Outdoor	Outdoor	Outdoor	Outdoor	Outdoor	Outdoor	Outdoor
Cooling (standard conditions)	Capacity	Btu/h	12,000 (2,900–14,000)	18,000 (10,000–19,000)	24,000 (11,200–27,000)	30,000 (7,600–32,000)	36,000 (13,650–36,500)	42,000 (10,000–42,000)	48,000 (12,000–54,000)	55,000 (17,700–57,000)
	Input	W	1070	1650	2500	2800	3950	4280	4650	5600
	Current	A	4.5	7.5	11.0	12.5	17.5	19.0	8.5	9.0
	EER	W/W	3.29	3.20	2.81	3.14	2.67	2.88	3.03	2.88
Heating (standard conditions)	Capacity	Btu/h	14,300 (1,600–14,700)	19,000 (8,260–21,500)	25,000 (9,600–30,500)	34,000 (9,200–33,200)	38,000 (9,900–48,000)	45,000 (11,500–48,000)	54,000 (14,000–59,000)	62,000 (14,700–66,000)
	Input	W	1,150	1,600	1,850	2,500	3,000	3,680	4,580	5,400
	Current	A	5.0	7.0	8.5	11.0	13.5	16.5	8.0	10.0
	COP	W/W	3.64	3.48	3.96	3.99	3.71	3.58	3.46	3.37
Indoor air flow (High / Mid / Low)		m3/h	569 / 485 / 389	680 / 584 / 479	1,247 / 1,118 / 992	1,700 / 1,530 / 1,300	1,700 / 1,530 / 1,300	1,900 / 1,750 / 1,600	1,900 / 1,750 / 1,600	2,000 / 1,850 / 1,650
Indoor noise level (High / Mid / Low)		dB(A)	42 / 37.5 / 34.5	45.4 / 44 / 39	50 / 47.5 / 42	50.5 / 48 / 46	51 / 48 / 46	52.5 / 50 / 47.5	52.5 / 50.5 / 48	54.5 / 52 / 49.5
Indoor unit	Dimension (WxDxH)	mm	570 x 570 x 260	570 x 570 x 260	830 x 830 x 205	830 x 830 x 245	830 x 830 x 245	830 x 830 x 287	830 x 830 x 287	830 x 830 x 287
	Packing (WxDxH)	mm	662 x 662 x 317	662 x 662 x 317	910 x 910 x 250	910 x 910 x 290	910 x 910 x 290	910 x 910 x 330	910 x 910 x 330	910 x 910 x 330
	Net / Gross weight	kg	16.3 / 20.4	16 / 20.6	21.6 / 25.4	24.6 / 28.6	27.2 / 31.2	29.3 / 33.5	29.3 / 33.5	29.3 / 33.5
Outdoor noise level		dB(A)	53.6	59	60	62	63	63	63.5	64
Outdoor unit	Dimension (WxDxH)	mm	765 x 303 x 555	805 x 330 x 554	890 x 342 x 673	946 x 410 x 810	946 x 410 x 810	946 x 410 x 810	952 x 415 x 1,333	952 x 415 x 1,333
	Packing (WxDxH)	mm	887 x 337 x 610	915 x 370 x 615	995 x 398 x 740	1,090 x 500 x 885	1,090 x 500 x 885	1,090 x 500 x 885	1,095 x 495 x 1480	1,095 x 495 x 1,480
	Net / Gross weight	kg	26.6 / 29	32.5 / 35.2	43.9 / 46.9	52.8 / 57.3	66.9 / 71.5	71 / 75	103.7 / 118.3	107 / 121.2
Refrigerant type		kg	R32 / 0.71	R32 / 1.15	R32 / 1.5	R32 / 2	R32 / 2.4	R32 / 2.8	R32 / 2.9	R32 / 3
Refrigerant piping	Liquid side / Gas side	mm (inch)	6.35 mm (1/4 in) / 9.52 mm (3/8 in)	6.35 mm (1/4 in) / 12.7 mm (1/2 in)	9.52 mm (3/8 in) / 15.9 mm (5/8 in)	9.52 mm (3/8 in) / 15.9 mm (5/8 in)	9.52 mm (3/8 in) / 15.9 mm (5/8 in)	9.52 mm (3/8 in) / 15.9 mm (5/8 in)	9.52 mm (3/8 in) / 15.9 mm (5/8 in)	9.52 mm (3/8 in) / 15.9 mm (5/8 in)
	Max. refrigerant pipe length	m	25	30	50	50	75	75	75	75
	Max. difference in level	m	10	20	25	25	30	30	30	30
Controller (optional)			Remote (WiFi)	Remote (WiFi)	Remote (WiFi)	Remote (WiFi)	Remote (WiFi)	Remote (WiFi)	Remote (WiFi)	Remote (WiFi)
Operation temperature		°C	16~30	16~30	16~30	16~30	16~30	16~30	16~30	16~30

Disclaimer:
Test standard: Performance / Reliability / Sound pressure ISO 5151 Safety: IEC 60335-1; IEC 60335-2-40.
All features and specifications are subject to change without prior notice for product improvement purposes.

*Disclaimer: Each IDU requires only one ODU. Different ODUs may be used to ensure different capacities of the air conditioner.

CASSETTE

Fixed Speed
42KTD | 18k – 45k



18k – 24 k (FS) 30k – 45k (FS)

Indoor model			42KTD018N8FSB	42KTD024N8FSB	42KTD030N8FSB	42KTD036N8FSB	42KTD045N8FSB
Outdoor model*			38KUS018N8FSB	38KUS024N8FSB	38KUS030N8FSB	38KUS036N8FSB	38KUS045N8FSB
Power supply (indoor)		V- Ph-Hz	220–240V, 1Ph, 50Hz	220–240V, 1Ph, 50Hz	220–240V, 1Ph, 50Hz	380–415V, 3Ph, 50Hz	380–415V, 3Ph, 50Hz
Power supply (outdoor)		V- Ph-Hz	220–240V, 1Ph, 50Hz	220–240V, 1Ph, 50Hz	220–240V, 1Ph, 50Hz	380–415V, 3Ph, 50Hz	380–415V, 3Ph, 50Hz
Power supply from			Indoor	Outdoor	Outdoor	Outdoor	Outdoor
Cooling	Capacity	Btu/h	18000	24000	30000	36000	45000
	Input	W	1600	2400	3100	3600	4740
	Current	A	7.0	10.5	13.91	5.21	8.8
	EER	W/W	3.30	2.93	2.84	2.93	2.78
Indoor air flow (High / Mid / Low)		m3/h	1,200 / 880 / 730	1,320 / 990 / 820	1,935 / 1,652 / 1,411	1,955 / 1,653 / 1,403	1,950 / 1,790 / 1,620
Indoor noise level (High / Mid / Low)		dB(A)	44 / 37.5 / 34.5	46 / 40 / 37	53 / 49.5 / 46	53 / 49.5 / 45.5	54 / 52 / 49
Indoor unit	Dimension (WxDxH)	mm	830 x 830 x 205	830 x 830 x 205	830 x 830 x 245	830 x 830 x 245	830 x 830 x 245
	Packing (WxDxH)	mm	910 x 910 x 250	910 x 910 x 250	910 x 910 x 290	910 x 910 x 290	910 x 910 x 290
	Net / Gross weight	kg	22.2 / 26	22.2 / 25.9	25.7 / 29.8	25.8 / 29.9	28 / 32.1
Outdoor noise level		dB(A)	57	59	59.5	63	62
Outdoor unit	Dimension (WxDxH)	mm	805 x 330 x 554	890 x 342 x 673	946 x 410 x 810	946 x 410 x 810	946 x 410 x 810
	Packing (WxDxH)	mm	915 x 370 x 615	995 x 398 x 740	1,090 x 500 x 885	1,090 x 500 x 885	1,090 x 500 x 885
	Net / Gross weight	kg	38.9 / 41.5	51.8 / 55	63.2 / 68	66.1 / 71	71.5 / 76.1
Refrigerant type		kg	R32 / 0.72	R32 / 1.3	R32 / 1.7	R32 / 1.6	R32 / 1.9
Refrigerant piping	Liquid side / Gas side	mm (inch)	6.35 mm (1/4 in) / 12.7 mm (1/2 in)	9.52 mm (3/8 in) / 15.9 mm (5/8 in)	9.52 mm (3/8 in) / 15.9 mm (5/8 in)	9.52 mm (3/8 in) / 15.9 mm (5/8 in)	9.52 mm (3/8 in) / 15.9 mm (5/8 in)
	Max. refrigerant pipe length	m	25	25	30	30	50
	Max. difference in level	m	15	15	20	20	30
Controller			Remote (WiFi)	Remote (WiFi)	Remote (WiFi)	Remote (WiFi)	Remote (WiFi)
Operation temperature		°C	17~30	17~30	17~30	17~30	17~30

Disclaimer:
Test standard: Performance / Reliability / Sound pressure ISO 5151. Safety: IEC 60335-1; IEC 60335-2-40.
All features and specifications are subject to change without prior notice for product improvement purposes.

*Disclaimer: Each IDU requires only one ODU. Different ODUs may be used to ensure different capacities of the air conditioner.

DUCTED
Inverter
42QSB | 12k – 55k



Indoor model			42QSB012N8VSB	42QSB018N8VSB	42QSB024N8VSB	42QSB030N8VSB	42QSB036N8VSB	42QSB042N8VSB	42QSB048N8VSB	42QSB055N8VSB
Outdoor model*			38QUS012N8VSB	38QUS018N8VSB	38QUS024N8VSB	38QUS030N8VSB	38QUS036N8VSB-1	38QUS042N8VSB	38QUS048N8VSB	38QUS055N8VSB
Power supply (indoor)		V- Ph-Hz	220–240V, 1Ph, 50Hz	220–240V, 1Ph, 50Hz	220–240V, 1Ph, 50Hz	220–240V, 1Ph, 50Hz	220–240V, 1Ph, 50Hz	220–240V, 1Ph, 50Hz	220–240V, 1Ph, 50Hz	220–240V, 1Ph, 50Hz
Power supply (outdoor)		V- Ph-Hz	220–240V, 1Ph, 50Hz	220–240V, 1Ph, 50Hz	220–240V,1Ph,50Hz	220–240V, 1Ph, 50Hz	220–240V, 1Ph, 50Hz	220–240V, 1Ph, 50Hz	380–415V, 3Ph, 50Hz	380–415V, 3Ph, 50Hz
Power supply from			Outdoor	Outdoor	Outdoor	Outdoor	Outdoor	Outdoor	Outdoor	Outdoor
Cooling (standard conditions)	Capacity	Btu/h	12,000 (1,800–13,600)	18,000 (8,700–20,000)	24,000 (11,200–27,800)	30,000 (7,600–33,600)	36,000 (9,300–40,000)	42,000 (10,000–42,000)	48,000 (12,000–53,000)	55,000 (14,000–60,000)
	Input	W	1070.00	1550.00	2250.00	2550.00	3950.00	4300.00	4800.00	5450.00
	Current	A	4.80	6.80	10.00	11.50	18.00	18.50	8.50	9.60
	EER	W/W	3.29	3.40	3.13	3.45	3.00	2.86	2.93	2.96
Heating (standard conditions)	Capacity	Btu/h	15,000 (3,400–15,000)	20,000 (7,500–21,000)	25,000 (9,600–29,000)	32,000 (9,200–34,200)	40,000 (9,500–44,000)	46,000 (11,500–48,000)	53,000 (14,000–62,000)	62,000 (15,000–70,000)
	Input	W	1200	1520	1800	2300	3250	3450	4500	5200
	Current	A	5.30	6.70	8.00	10.00	15.00	15.00	8.00	9.50
	COP	W/W	3.66	3.86	4.07	4.08	4.00	3.91	3.45	3.49
Indoor air flow (High / Mid / Low)		m3/h	600 / 480 / 300	911 / 706.3 / 515.2	1,229 / 1,035 / 825.1	2,100 / 1,800 / 1,500	2,100 / 1,800 / 1,500	2,400 / 2,040 / 1,680	2,400 / 2,040 / 1,680	2,600 / 2,210 / 1,820
Indoor noise level (High / Mid / Low)		dB(A)	34.5 / 32 / 30	42 / 39 / 35	49 / 46 / 41	50.5 / 48 / 46	50 / 48 / 46	51.5 / 49 / 48	51.5 / 49 / 47	52.5 / 49 / 47
Indoor unit	Dimension (WxDxH)	mm	700 x 506 x 200	880 x 674 x 210	1,100 x 774 x 249	1,360 x 774 x 249	1,360 x 774 x 249	1,200 x 874 x 300	1,200 x 874 x 300	1,200 x 874 x 300
	Packing (WxDxH)	mm	860 x 540 x 285	1,070 x 725 x 280	1,305 x 805 x 315	1,570 x 805 x 330	1,570 x 805 x 330	1,405 x 915 x 365	1,405 x 915 x 365	1,405 x 915 x 365
	Net / Gross weight	kg	17.8 / 21.5	24.4 / 29.6	32.3 / 39.1	40.5 / 48.3	40.5 / 48.2	47.6 / 55.8	47.6 / 55.8	47.4 / 56.1
Outdoor noise level		dB(A)	53.6	56	60	63	63	63	63.5	64
Outdoor unit	Dimension (WxDxH)	mm	765 x 303 x 555	805 x 330 x 554	890 x 342 x 673	946 x 410 x 810	946 x 410 x 810	946 x 410 x 810	952 x 415 x 1,333	952 x 415 x 1,333
	Packing (WxDxH)	mm	887 x 337 x 610	915 x 370 x 615	995 x 398 x 740	1,090 x 500 x 885	1,090 x 500 x 885	1,090 x 500 x 885	1,095 x 495 x 1,480	1,095 x 495 x 1,480
	Net / Gross weight	kg	26.6 / 29	32.5 / 35.2	43.9 / 46.9	52.8 / 57.3	66.9 / 71.5	71 / 75	103.7 / 118.3	107 / 121.2
Refrigerant type		kg	R32 / 0.71	R32 / 1.15	R32 / 1.5	R32 / 2	R32 / 2.4	R32 / 2.8	R32 / 2.9	R32 / 3
Refrigerant piping	Liquid side / Gas side	mm (inch)	6.35 mm (1/4 in) / 9.52 mm (3/8 in)	6.35 mm (1/4 in) / 12.7 mm (1/2 in)	9.52 mm (3/8 in) / 15.9 mm (5/8 in)	9.52 mm (3/8 in) / 15.9 mm (5/8 in)	9.52 mm (3/8 in) / 15.9 mm (5/8 in)	9.52 mm (3/8 in) / 15.9 mm (5/8 in)	9.52 mm (3/8 in) / 15.9 mm (5/8 in)	9.52 mm (3/8 in) / 15.9 mm (5/8 in)
	Max. refrigerant pipe length	m	25	30	50	50	75	75	75	75
	Max. difference in level	m	10	20	25	25	30	30	30	30
Controller (optional)			Remote (WiFi)	Remote (WiFi)	Remote (WiFi)	Remote (WiFi)	Remote (WiFi)	Remote (WiFi)	Remote (WiFi)	Remote (WiFi)
Operation temperature		°C	16~30	16~30	16~30	16~30	16~30	16~30	16~30	16~30

Disclaimer:
Test standard: Performance / Reliability / Sound pressure ISO 5151 Safety: IEC 60335-1; IEC 60335-2-40.
All features and specifications are subject to change without prior notice for product improvement purposes.

*Disclaimer: Each IDU requires only one ODU. Different ODUs may be used to ensure different capacities of the air conditioner.

UNDER CEILING

Inverter
42QZL | 12k – 55k



Indoor model			42QZL012N8VSB	42QZL018N8VSB	42QZL024N8VSB	42QZL036N8VSB	42QZL048N8VSB	42QZL055N8VSB
Outdoor model*			38QUS012N8VSB	38QUS018N8VSB	38QUS024N8VSB	38QUS036N8VSB-1	38QUS048N8VSB	38QUS055N8VSB
Power supply (indoor)		V- Ph-Hz	220–240V, 1Ph, 50Hz	220–240V, 1Ph, 50Hz	220–240V, 1Ph, 50Hz	220–240V, 1Ph, 50Hz	220–240V, 1Ph, 50Hz	220–240V, 1Ph, 50Hz
Power supply (outdoor)		V- Ph-Hz	220–240V, 1Ph, 50Hz	220–240V, 1Ph, 50Hz	220–240V, 1Ph, 50Hz	220–240V, 1Ph, 50Hz	380–415V, 3Ph, 50Hz	380–415V, 3Ph, 50Hz
Power supply from			Outdoor	Outdoor	Outdoor	Outdoor	Outdoor	Outdoor
Cooling	Capacity	Btu/h	12,000 (2,630–13,500)	18,000 (9,250–20,000)	24,000 (11,000–26,500)	36,000 (9,280–40,200)	48,000 (12,000–52,000)	55,000 (14,000–57,000)
	Input	W	1020	1460	2410	3900	5000	5870
	Current	A	4.54	6.5	10.5	17.0	9.0	10.0
	EER	W/W	3.45	3.61	2.92	2.71	2.81	2.75
Heating	Capacity	Btu/h	14,000 (1,600–14,800)	19,000 (8,260–21,500)	24,600 (9,280–28,300)	40,000 (9,500–43,600)	53,000 (14,000–58,000)	61,000 (15,000–67,000)
	Input	W	1170	1500	2100	3350	5280	6100
	Current	A	4.74	6.6	8.5	15.0	9.0	10.5
	COP	W/W	3.51	3.71	3.43	3.50	2.94	2.93
Indoor air flow (High / Mid / Low)		m3/h	550 / 466 / 386	958 / 839 / 723	1,192 / 1,023 / 853	1,955 / 1,728 / 1,504	2,100 / 1,850 / 1,600	2,200 / 1,950 / 1,650
Indoor noise level (High / Mid / Low)		dB(A)	41.5 / 38 / 33.5	44 / 41 / 37	51 / 47 / 43	51 / 48 / 45	53 / 50 / 46	55 / 52 / 48
Indoor unit	Dimension (WxDxH)	mm	700 x 600 x 210	1,068 x 675x235	1,068 x 675 x 235	1,650 x 675 x 235	1,650 x 675 x 235	1,650 x 675 x 235
	Packing (WxDxH)	mm	780 x 685 x 300	1,145 x 755 x 318	1,145 x 755 x 318	1,725 x 755 x 318	1,725 x 755 x 318	1,725 x 755 x 318
	Net / Gross weight	kg	14.6 / 18.1	28 / 33.3	28 / 33.1	41.5 / 48	41.7 / 48.5	42.3 / 49.2
Outdoor noise level		dB(A)	53.6	59	60	63	63.5	64
Outdoor unit	Dimension (WxDxH)	mm	765 x 303 x 555	805 x 330 x 554	890 x 342 x 673	946 x 410 x 810	952 x 415 x 1,333	952 x 415 x 1,333
	Packing (WxDxH)	mm	887 x 337 x 610	915 x 370 x 615	995 x 398 x 740	1,090 x 500 x 885	1,095 x 495 x 1,480	1,095 x 495 x 1,480
	Net / Gross weight	kg	26.6 / 29	32.5 / 35.2	43.9 / 46.9	66.9 / 71.5	103.7 / 118.3	107 / 121.2
Refrigerant type		kg	R32 / 0.71	R32 / 1.15	R32 / 1.5	R32 / 2.4	R32 / 2.9	R32 / 3.0
Refrigerant piping	Liquid side / Gas side	mm (inch)	6.35 mm (1/4 in) / 9.52 mm (3/8 in)	6.35 mm (1/4 in) / 12.7 mm (1/2 in)	9.52 mm (3/8 in) / 15.9 mm (5/8 in)	9.52 mm (3/8 in) / 15.9 mm (5/8 in)	9.52 mm (3/8 in) / 15.9 mm (5/8 in)	9.52 mm (3/8 in) / 15.9 mm (5/8 in)
	Max. refrigerant pipe length	m	25	30	50	75	75	75
	Max. difference in level	m	10	20	25	30	30	30
Controller (optional)			Remote	Remote (WiFi)	Remote (WiFi)	Remote (WiFi)	Remote (WiFi)	Remote (WiFi)
Operation temperature		°C	16~30	16~30	16~30	16~30	16~30	16~30

Disclaimer:
Test standard: Performance / Reliability / Sound pressure ISO 5151 Safety: IEC 60335-1; IEC 60335-2-40.
All features and specifications are subject to change without prior notice for product improvement purposes.

*Disclaimer: Each IDU requires only one ODU. Different ODUs may be used to ensure different capacities of the air conditioner.

UNDER CEILING

Fixed Speed
42KZL | 24k – 45k



30k – 45k (FS)

Indoor unit model			42KZL024N8FSB	42KZL030N8FSB	42KZL036N8FSB	42KZL045N8FSB
Outdoor unit model*			38KUS024N8FSB	38KUS030N8FSB	38KUS036N8FSB	38KUS045N8FSB
Power supply (indoor)		V-Ph-Hz	220–240V, 1Ph, 50Hz	220–240V, 1Ph, 50Hz	380–415V, 3Ph, 50Hz	380–415V, 3Ph, 50Hz
Power supply (outdoor)		V-Ph-Hz	220–240V, 1Ph, 50Hz	220–240V, 1Ph, 50Hz	380–415V, 3Ph, 50Hz	380–415V, 3Ph, 50Hz
Power supply from			Indoor	Outdoor	Outdoor	Outdoor
Cooling	Capacity	Btu/h	24000	30000	36000	45000
	Input	W	2400	3080	3800	4900
	Current	A	10.5	14.00	6.50	8.5
	EER	W/W	2.93	2.85	2.78	2.7
Indoor air flow (High / Mid / Low)		m3/h	1,194 / 999 / 863	1,837 / 1,516 / 1,291	1,741 / 1,467 / 1,266	2,220 / 1,900 / 1,690
Indoor noise level (High / Mid / Low)		dB(A)	52 / 47 / 44	54 / 50 / 47	52.5 / 48.5 / 45	55 / 49 / 46
Indoor unit	Dimension (WxDxH)	mm	1,068 x 675 x 235	1,285 x 675 x 235	1,285 x 675 x 235	1,650 x 675 x 235
	Packing (WxDxH)	mm	1,145 x 755 x 318	1,360 x 755 x 318	1,360 x 755 x 318	1,725 x 755 x 318
	Net / Gross weight	kg	24.4 / 29.3	29.1 / 34.6	29.5 / 34.8	39.5 / 45.9
Outdoor noise level (reference)		dB(A)	59.0	60	63.5	63
Outdoor unit	Dimension (WxDxH)	mm	890 x 342 x 673	946 x 410 x 810	946 x 410 x 810	946 x 410 x 810
	Packing (WxDxH)	mm	995 x 398 x 740	1,090 x 500 x 885	1,090 x 500 x 885	1,090 x 500 x 885
	Net / Gross weight	kg	51.8 / 55	63.2 / 68	66.1 / 71	71.5 / 76.1
Refrigerant type		kg	R32 / 1.3	R32 / 1.7	R32 / 1.6	R32 / 1.9
Refrigerant piping	Liquid side / Gas side	mm (inch)	9.52 mm (3/8 in) / 15.9 mm (5/8 in)	9.52 mm (3/8 in) / 15.9 mm (5/8 in)	9.52 mm (3/8 in) / 15.9 mm (5/8 in)	9.52 mm (3/8 in) / 15.9 mm (5/8 in)
	Max. refrigerant pipe length	m	25	30	30	50
	Max. difference in level	m	15	20	20	30
Controller (optional)			Remote	Remote (WiFi)	Remote (WiFi)	Remote (WiFi)
Operation temperature		°C	17~30	17~30	17~30	17~30

Disclaimer:
Test standard: Performance / Reliability / Sound pressure ISO 5151 Safety: IEC 60335-1; IEC 60335-2-40.
All features and specifications are subject to change without prior notice for product improvement purposes.

*Each IDU requires only one ODU. Different ODUs may be used to ensure different capacities of the air conditioner.





For more information or to find out how to buy:

Visit: www.carrier.com.my | **Email:** cmb.sales@carrier.com

Headquarters

Lot 10F-1, 10th Floor, Tower 5,
PFCC Jalan Puteri, Bandar Puteri
47100 Puchong, Selangor
Phone: 03 80656228
Fax (Sales): 03 80909275
Fax (Service & Operation): 03 80909396

Johor Branch

No. 53 Jalan Molek,
3/20 Taman Molek,
81100 Johor Bahru
Phone: 07 3646666
Fax: 07 364 6655

Penang Branch

No. 67 (Ground Floor) Persiaran Bayan Indah
11900 Bayan Bay
Phone: 04 611839 | 04 6118389 | 04 6118370 | 04 6118372
Fax: 04 6118015

Sabah Branch

DBKK Shop No. 20, Ground Floor Block B
Damai Point, Luyang Off Jalan Damai
88300 Kota Kinabalu
Phone: 088 223388 | 088 238866
Fax: 088 223822

Sarawak Branch

Lot 112, S58 Ground Floor, Central Road East
93300 Kuching
Phone: 082 429221 | 082 252337
Fax: 082 252337

Available from 9AM to 5PM on weekdays. Closed on weekends and public holidays.

Light Commercial Series February 2023