



CASSETTE

1
YEAR

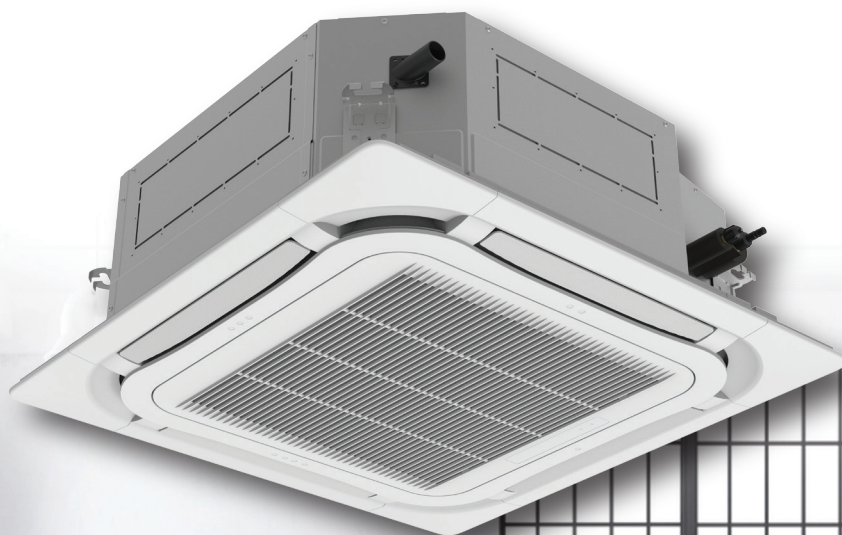
**WARRANTY FOR
SPARE PARTS**

3
YEARS

**WARRANTY FOR
COMPRESSOR**

*Warranty for 3.0HP / 3 Phase and Above

CEILING CASSETTE



Ceiling Cassette Unit

MINI CEILING CASSETTE
GUD50T/A-S
& GUD50T/A-K



YB1FA (Standard) XK75 (Optional) XK117 (Optional)

- 360° air discharge;
- Width and length of case are only 570mm
- Selection of air return dual temperature sensors: Match with wired controller can select air return temperature sensor or wired controller temperature sensor as the indoor ambient temperature sensor for improving comfort;
- DC motor and DC water pump, energy-saving and high efficiency;
- Fresh air can be connected;
- Lift of water pump is 1000mm;
- Energy efficiency can be up to A++ in cooling season

U-Match - Outdoor Models

System	50	71	100	125	140	160
Air cooled						

COMMERCIAL AC

『U-MATCH』

Fixed-frequency Series



High ESP



Wide voltage range



Wide operation range



Auto clean



Self-diagnosis



Easier maintainability



Anti-cold function



Quality motor



Comprehensive protection



Inner groove copper



High efficiency



Compact design



Intelligent defrosting

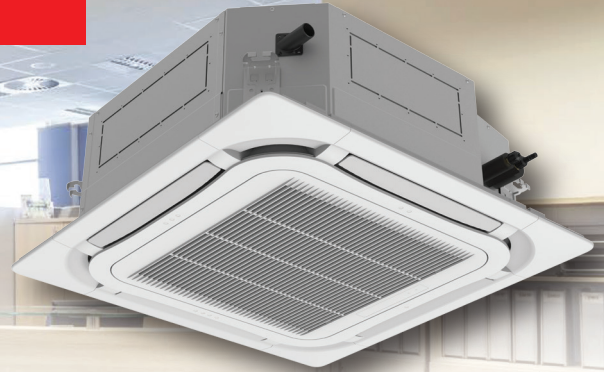
CASSETTE

NON-INVERTER SERIES

Indoor Unit	Type		Cassette	Cassette	Cassette	Cassette	Cassette	Cassette	Cassette
	Model		GUD50T/A-K	GU71T/A-K	GU85T/A1-K	GU100T/A-K	GU125T/A-K	GU140T/A-K	GU160T/A-K
Electrical Data	Power Supply	V-Hz-Ph	220-240-50-1						
	Power Input	kW	0.04	0.10		0.155	0.155	0.25	
Sound Pressure (H / M / L)		dB	43/38/35	45/42/39	46/45/42	50/48/45	50/49/47	51/47/45	
Refrigerant			R410A						
Air Flow Volume (RATED EXP)		CFM	411.95	736		942	942	1177	
		m³/h	700	1250		1600	1600	2000	
Fan Motor	Drive Type	-	Direct						
Drainage Connection Size		mm	φ25×1.5						
Dimension	Outline (W x D x H)	mm	570×570×265	840×840×240		840×840×240		840×840×290	
	Package (L x W x H)	mm	698×653×295	933×903×272		933×903×272		933×903×335	
Weight	Net / Gross	kg	17.0/21.0	30.0/37.0		30.0/37.0	33.0/40.0	34.0/41.0	
Loading Quantity (within panel)		20' GP	216	96		96	96	84	
		40' GP	432	208		208	208	182	
Panel	Outline (W x D x H)	mm	620×620×47.5	950×950×52		950×950×52	950×950×52	950×950×52	
	Package (W x D x H)	mm	701×701×125	1033×1038×112		1033×1038×112	1033×1038×112	1033×1038×112	
	Net Weight	kg	4.5	9.5		9.5	9.5	9.5	
Outdoor Unit	Model		GUL50W/A-K	GUL71W/A-K	GU85W/A1-K	GUL100W/A-M	GUL125W/A-M	GUL140W/A-M	GUL160W/A-M
Cooling Capacity		kW	4.90	7.10	8.30	10.30	12.00	14.10	15.00
		Btu/h	16700	24200	28300	35100	40900	48100	51200
EER / C.O.P		W/W	3.06/-	3.02/-	3.13/-	2.94/-	2.89/-	2.52/-	2.88/-
Electrical Data	Power Supply	V-Hz-Ph	220-240-50-1	220-240-50-1	220-240-50-1	380-415-50-3	380-415-50-3	380-415-50-3	380-415-50-3
	Power Input	kW	1.60	2.35	2.65	3.50	4.15	5.60	5.20
Sound Pressure (H / M / L)		dB (A)	50/-/-	53/-/-	55/-/-	54/-/-	57/-/-	57/-/-	56/-/-
Fan Motor	Drive Type	-	Direct	Direct	Direct	Direct	Direct	Direct	Direct
Compressor		W	1540	2060	2680	3350	4040	4900	4900
Dimension	Outline (W x D x H)	mm	761×256×548	892×340×698		920×370×790		940×460×820	
	Package (W x D x H)	mm	881×363×595	1029×458×750		1083×488×875		1083×573×973	
Weight	Net / Gross	kg	37.0/39.5	53.0/57.0	61.0/65.0	68.0/73.0	93.0/103.0		
Loading Quantity		20' GP	164	81		48	40		
		40' GP	344	171		96	88		
Connection Pipe	Gas Additional Charge		g/m	22.0	30.0	54	54		
	Outer Diameter	Liquid	inch	1/4"	3/8"	3/8"	3/8"		
		Gas	inch	1/2"	5/8"	5/8"	5/8"		
	Max Distance	Height	m	15	15	20	30		
		Length	m	30	30	30	50		

*NOTE: For The Improvement, The Specifications, Designs and Information In This Catalogue Are Subjected To Change Without Prior Notice.

Ceiling Cassette Unit



Indoor Unit	Model		GULD18T/A-T	GULD24T/A-T	GULD30T/A-T	GULD36T/A-T	GULD42T/A-T
Electrical Data	Power Supply	V-Hz-Ph	220-240 / 208-230 -50/60-1				
	Power Input	kW	0.050	0.050	0.100	0.165	0.165
Sound Pressure		dB (A)	43/42/40/39		50/48/46/42	52/51/48/45	
Refrigerant			R32				
Air Flow Volume (RATED EXP)		CFM	647/618/565/507		883/865/812/728	1118/995/871/815	
		m3/h	1100/1050/960/860		1500/1470/1380/1240	1900/1690/1480/1380	
Fan Motor	Drive Type	-	Direct				
Drainage Connection Size		mm	φ25×1.5				
Dimension	Outline (W x D x H)	mm	840 x 840 x 240			840 x 840 x 290	
	Package (L x W x H)	mm	963 x 963 x 325			963 x 963 x 379	
Weight	Net / Gross	kg	29.0 / 36.0		31.0 / 38.0	36.0 / 44.0	
Loading Quantity (within panel)		20' GP	84			72	
		40' GP	168			144	
Panel	Outline (W x D x H)	mm	950 x 950 x 52				
	Package (W x D x H)	mm	1033 x 1038 x 112				
	Net Weight	kg	6				

Outdoor Unit			GULD18W/NhA-T	GULD24W/NhA-T	GULD30W/NhA-T	GULD36W/NhA-T	GULD42W/NhA-T
Cooling Capacity		kW	5.30	7.30	8.80	10.60	11.98
		Btu/h	18,100	24,900	30,000	36,200	40,900
EER / C.O.P		W/W	3.63 / -	3.78 / -	3.09 / -	3.12 / -	3.33 / -
		Btu/h.W	12.40 / -	12.90 / -	10.53 / -	10.65 / -	11.36 / -
Electrical Data	Power Supply	V-Hz-Ph	220-240 / 208-230 -50/60-1				
	Power Input (R)	kW	1.46 (2.15)	1.93 (3.50)	2.85 (3.70)	3.40 (3.95)	3.60 (4.85)
	Input Current (R)	A	6.7 (11)	8.8 (17.50)	12.72 (19.00)	12.70 (20.00)	17.50 (23.00)
Sound Pressure (H / M / L)		dB (A)	52/-/-	52/-/-		53/-/-	55/-/-
Fan Motor	Drive Type		Direct	Direct	Direct	Direct	Direct
Compressor		W	1410	2420	2420	2420	3750
Dimension	Outline (W x D x H)	mm	818x 302 x 596	892 x 340 x 698		920 x 370 x 790	940 x 460 x 820
	Package (L x W x H)	mm	948 x 420 x 645	1029 x 458 x 750		1083 x 488 x 855	1083 x 573 x 973
Weight	Net / Gross	kg	39 / 42	51 / 55		58 / 63	80 / 92
Loading Quantity		20' GP	36	31		23	22
		40' GP	81	67		56	48
Connection Pipe	Gas Additional Charge		g/m	16.0	30.0	40.0	40.0
	Outer Diameter	Liquid	inch	1/4" (0.250)	3/8" (0.375)	3/8" (0.375)	3/8" (0.375)
		Gas	inch	1/2" (0.500)	5/8" (0.625)	5/8" (0.625)	5/8" (0.625)
	Max Distance	Height	m	20	25	25	30
		Length	m	35	50	50	65

*NOTE: For The Improvement, The Specifications, Designs and Information In This Catalogue Are Subjected To Change Without Prior Notice.